

so'mar





## ABOUT SO'MAR

Welcome aboard So'Mar, the award-winning expedition yacht built by Tansu shipyard, available for charter for up to 9 guests in 4 cabins. With meticulously curated interior styling, this vessel offers unparalleled sophistication and luxury.

Step into a world of unbridled luxury and spaciousness as you embark on unforgettable high-seas adventures aboard So'Mar. From traversing tropical paradises to exploring polar wonders, this remarkable yacht effortlessly combines comfort and style, allowing you to unwind, rejuvenate, and immerse yourself in breathtaking panoramas. Prepare to be captivated by the unmatched beauty and serenity that await you on the So'Mar expedition yacht.

So'Mar is equipped with a variety of tender and toys, providing ample opportunities for fun and adventure on the water. Its tender is a 7m/23' SPX 24 that ensures convenient transfers from ship to shore. Additionally, there is a brand new SeaDoo Spark Trixx jet ski from 2023, perfect for thrilling rides. For those seeking a unique experience, the boat also offers an e-foil Fliteboard and a non-electric foil board GP Australia, catering to different preferences. It also includes wakeboards suitable for both adults and children, ensuring that everyone can enjoy gliding across the waves. Kite surfing equipment is available for those who love the excitement of harnessing the wind's power. The wing foil equipment allows riders to combine windsurfing and kiteboarding for an exhilarating experience. If you prefer a more leisurely activity, the boat provides two stand-up paddleboards, perfect for exploring calm waters and scenic coastlines. She also offers electric scooters and an e-bicycle in chopper style for on-land exploration. Inflatable toys like swans, sofas, a banana boat, and a kayak add to the fun and relaxation.

All year round, So'Mar awaits you in the most enchanting destinations, ready to introduce you to magical places, delightful cuisine, and unforgettable experiences - endless enjoyment and excitement for all passengers, catering to both thrilling activities and leisurely pursuits.

Prepare for a time of cherished family memories as you embark on a charter adventure aboard the remarkable So'Mar expedition yacht. Every moment aboard this vessel will create everlasting memories.











## KEY FEATURES

- Outstanding crew
- Great selection of water toys
- Stabilizer systems underway and at anchor
- Remarkable fuel-efficiency (low consumption)
- Luxury military style yacht with a modern awe-inspiring interior
- Expansive deck space
- Two master cabins ( upper and full-beam amidships)
- extensive refit 2023 looking better than ever before

## EQUIPMENT

- Engines 2x715hp C18 Caterpillar; 1xNorthern lights 55kW + 1x35kW Northern Lights generators
- eco-cruising speed 9-10kts for maximum range
- Cruising Speed 13 knots
- Fuel Consumption 120 Litres/Hr

## WATERSPORTS

- Tender + Toys 7m SPX 24 sport tender powered by Mercury 300hp Varado high-performance engine (2022), SeaDoo Spark Trixx (2023), e-foil Fliteboard, non-electric foil board GP Australia, wakeboards for adults and children, kite surfing equipment, wing foil equipment, 2 stand-up paddleboards, Tiwal inflatable sailboat, windsurfing equipment for adults and children, electric scooters - electric kickboards, e-bicycle in chopper style, assorted inflatable toys such as swans, sofas, banana, and kayak.



























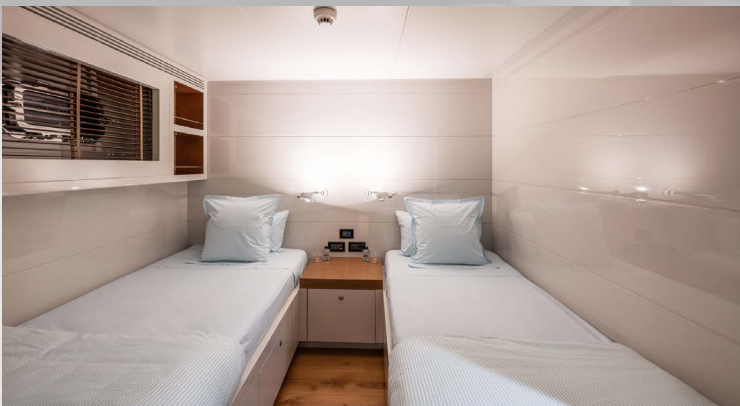












GUEST 9



CABINS 4



CREW 6

## CABIN CONFIGURATION

2 MASTER / 2 TWIN

## SPECIFICATION

LENGTH	37.92 M
BEAM	7.35 M
DRAFT	1.82 M
GT	248
CRUISING SPEED	13 KN
BUILT	2014   2023 TANSU YACHTS

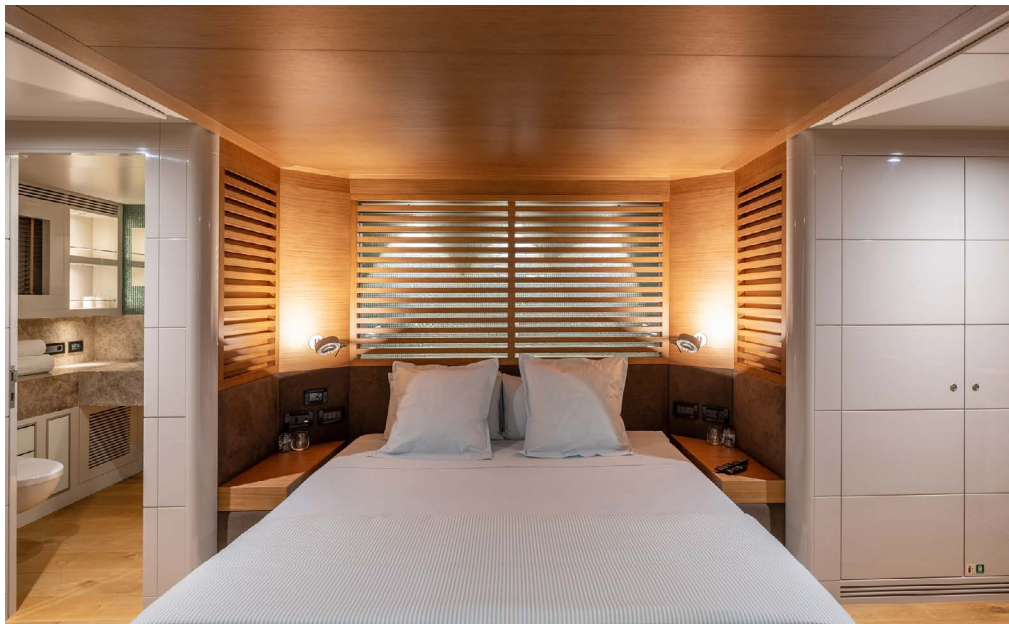
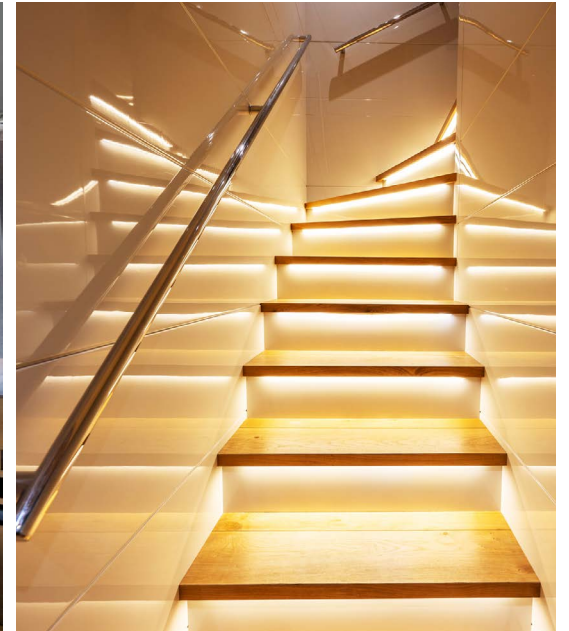
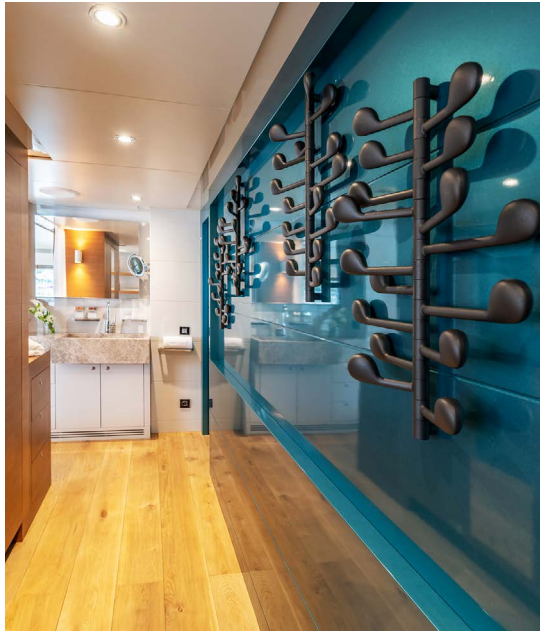
## SEASONAL CHARTER RATES

SUMMER/ WINTER RATE

€120,000 P/ WEEK HIGH SEASON

€110,000 P/ WEEK LOW SEASON









WE WISH YOU A WONDERFUL TIME ON BOARD !

